



# 2nd Annual Mountain Bike with

# MAYOR LEE



**Saturday, September 23, 2017**

Group Picture at 8:45 AM • Ride starts at 9:00 AM  
this is an intermediate/advanced ride, approximately 10+/- miles

**in Blue Diamond, NV**

Meet at Blue Diamond Park  
Refreshments and lunch will be provided



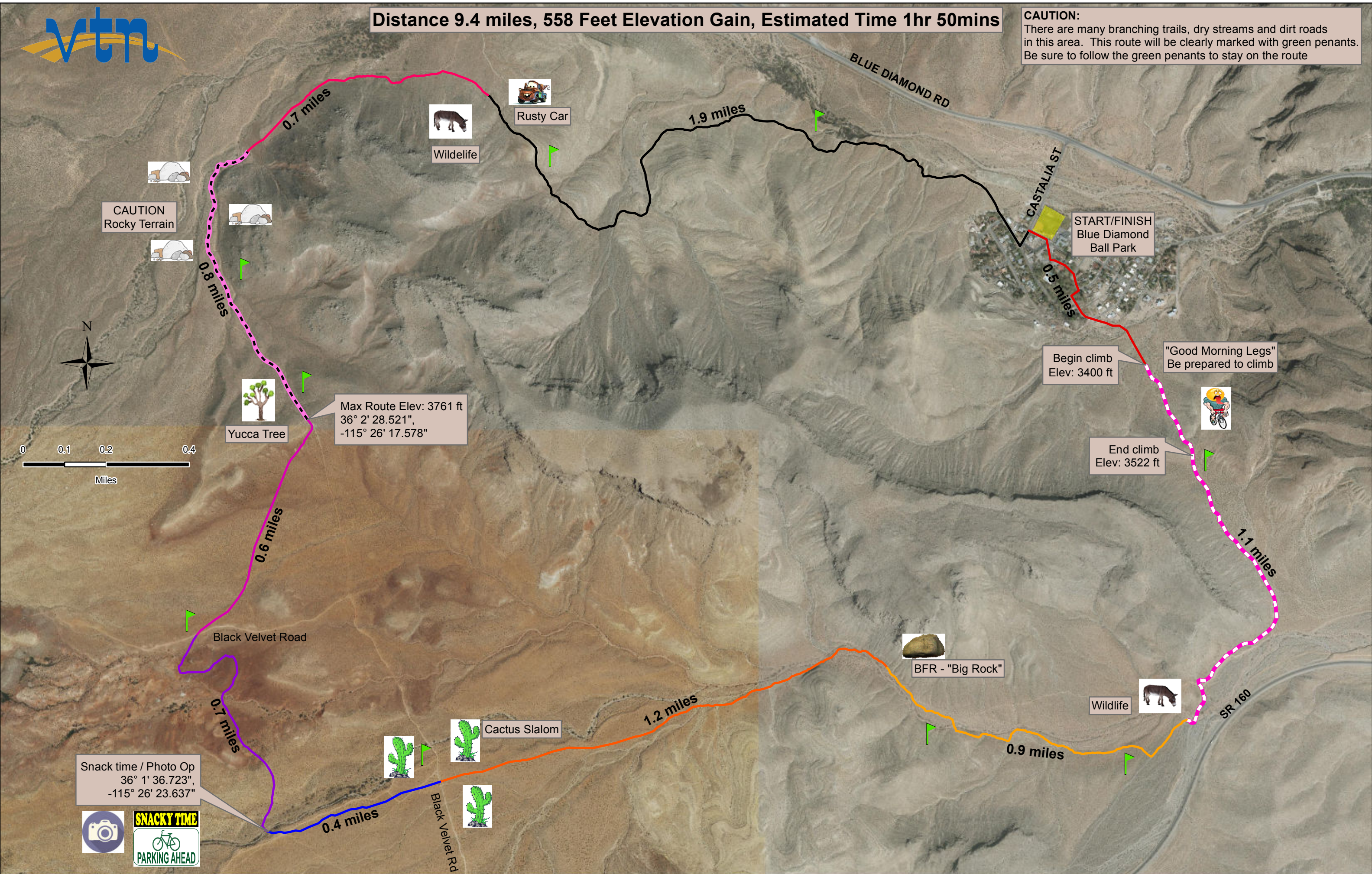
Please RSVP by September 8, 2017  
Jessica Flores – [jessicaf@vtnv.com](mailto:jessicaf@vtnv.com)



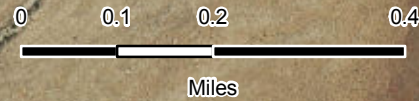


Distance 9.4 miles, 558 Feet Elevation Gain, Estimated Time 1hr 50mins

CAUTION: There are many branching trails, dry streams and dirt roads in this area. This route will be clearly marked with green penants. Be sure to follow the green penants to stay on the route



CAUTION Rocky Terrain



Max Route Elev: 3761 ft  
36° 2' 28.521",  
-115° 26' 17.578"

Begin climb  
Elev: 3400 ft

"Good Morning Legs"  
Be prepared to climb

End climb  
Elev: 3522 ft

Snack time / Photo Op  
36° 1' 36.723",  
-115° 26' 23.637"



**SNACKY TIME**  
PARKING AHEAD

Black Velvet Rd

SR 160

BLUE DIAMOND RD

CASTALIA ST

START/FINISH  
Blue Diamond  
Ball Park

Wildlife

Rusty Car

Yucca Tree

Black Velvet Road

BFR - "Big Rock"

Cactus Slalom

Wildlife

0.7 miles

0.8 miles

0.6 miles

0.7 miles

0.4 miles

1.2 miles

1.9 miles

0.9 miles

1.1 miles

0.5 miles